

# SouthbankONE

180 City Road, Southbank.

- o Rating: **4.5 Stars**
- o Check In: **2pm**, Check Out: **10am**
- o Office Hours: 7:00am To 8:00pm
- o Deposit / Payment Policy: [Visit FAQs](#)
- o Cancellation Policy: [Visit FAQs](#)

Accommodation Summary:	1 Bedroom	2 Bedrooms	2 Bedroom Executive	2 Bedroom Soho	3 Bedrooms
Bedding Configuration (Q = Queen, S = Single)	Q	2xQ (Q + 2xS on request)	2xQ (Q + 2xS on request)	2xQ + 1xS in study	2xQ + 2xS
Bathrooms	1	1	2	2	2
Maximum Number of Guests	2	4	4	5	6

## Apartment Inclusions:

### Living / Dining Area:

- Dining table with 4 or 6 chairs
- Sofas, lounge chairs & coffee table
- Floor lamp
- 32" LCD TV
- DVD player
- Shelf unit with CD stereo
- Desk with chair
- IDD telephone with broadband outlet (ethernet)\*
- 2 Bedroom Soho includes study with a single bed and free internet

### Fully equipped kitchen:

- 4 or 6 place dining setting includes: dinner plates, cereal bowls, bread/butter plates, cups & saucers, water glasses, wine glasses, table knives & forks, dessert spoons, soup spoons, tea spoons.
- Cookware includes: salt/pepper shakers, sugar bowl, utility knife, paring knife, set of tongs, egg lifter, perforated spoon, soup ladle, potato peeler, grater, corkscrew, colander, mixing bowls, plunger, frying pan, medium saucepan, large saucepan, cutting board, potato masher.
- Appliances include: 260 litre fridge/freezer, gas cooktop, microwave oven, oven, dishwasher, toaster and electric kettle.

### Bedrooms:

- Bedding as per above table.
- Linen set
- 2 bedside tables with lamps
- Clock radio
- Towelling

## Accommodation Summary:

### Southbank Suite 2 Bedrooms

Bedding Configuration (Q = Queen, S = Single)	2xQ + 1xS
Bathrooms	2
Maximum Number of Guests	5
Weekly Servicing	included



## Laundry :

- Top loading washing machine
- Dryer
- Ironing board & steam iron



## Facilities & services:

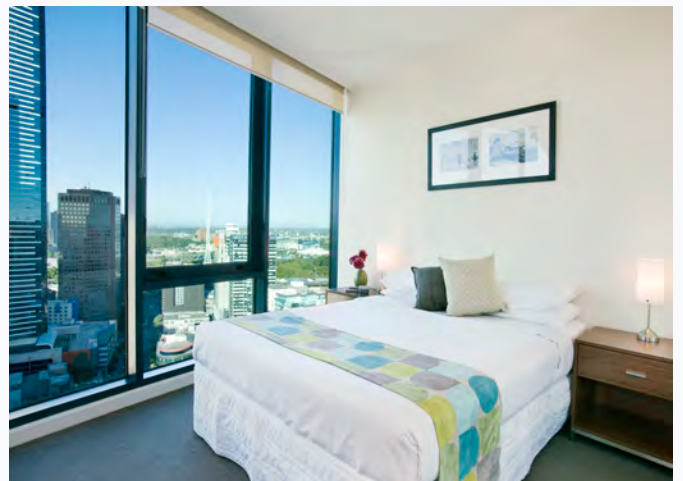
- Heated indoor pool
- Gymnasium
- Garden terrace with BBQ
- 7 day building staff and security
- Undercover secured car parking\*
- Free high speed WiFi
- Dry cleaning and laundry service\*
- Weekly servicing (daily servicing available for extra charge)

## Location Info:

Please note: The Skybus hotel shuttle stops at our Southbank office (187 City Rd) and connects with Tullamarine Airport. Interchange at Skybus terminal at Southern Cross Station. Visit [skybus.com.au](http://skybus.com.au) for more info.

## Distances (shortest walking distance):

- Crown Casino - 200m
- Southgate - 500m
- Victorian Arts Centre / NGV - 600m
- Melbourne Exhibition Centre - 650m
- Central Business District - 650m
- Melbourne Aquarium - 650m
- Flinders Street Station - 750m
- Melbourne Convention Centre - 900m
- Rialto Tower - 1000m
- Federation Square - 1000m
- Myer Music Bowl - 1200m
- Albert Park (F1 Grand Prix, Aquatic Centre, lake, golf) - 1700m
- Melbourne Park (Tennis Centre) - 1700m
- Etihad Stadium - 1900m
- Melbourne Cricket Ground - 2200m



\* items at extra charge