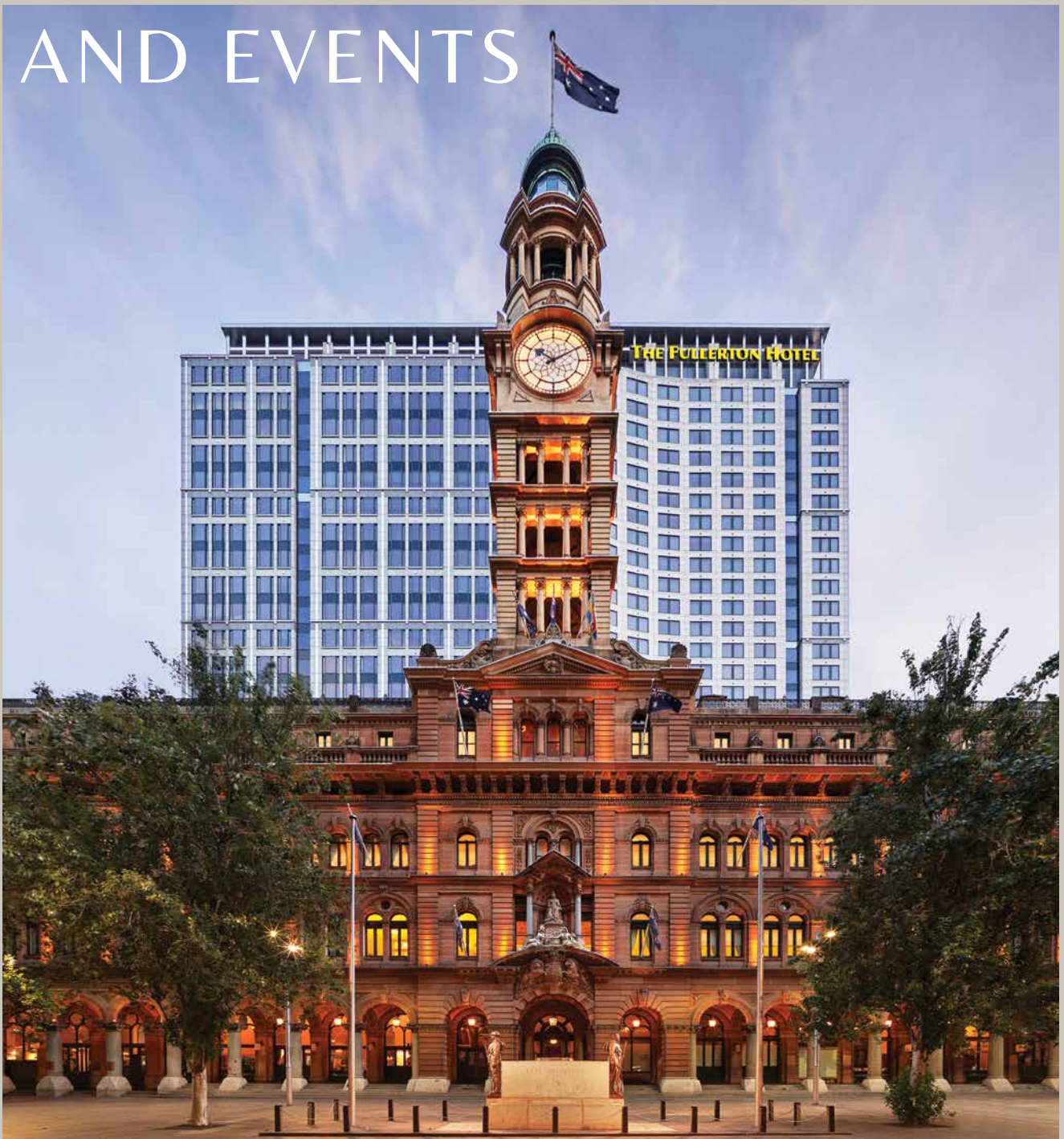


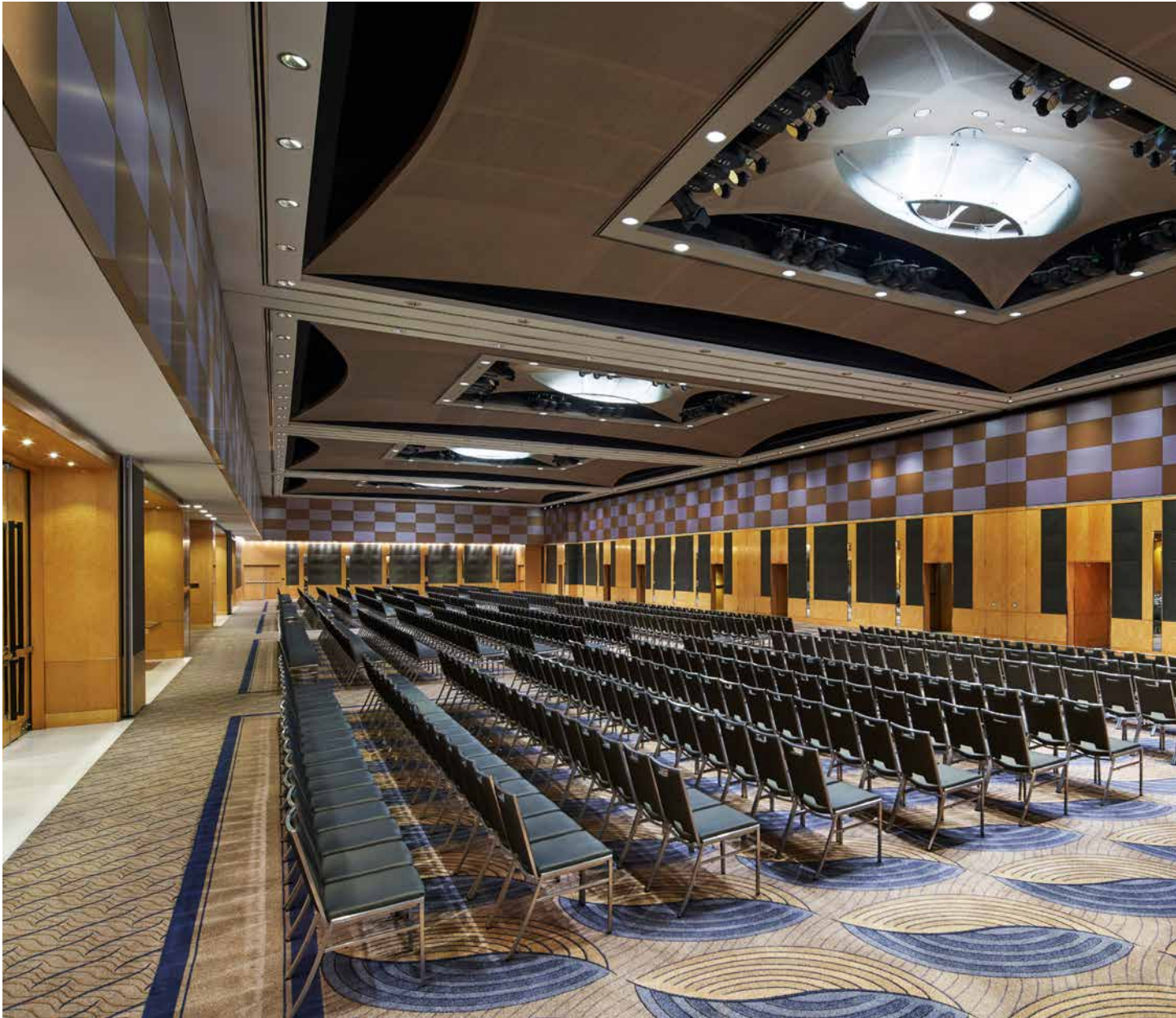


THE FULLERTON HOTEL
SYDNEY

MEETINGS AND EVENTS



FULLERTONHOTELS.COM



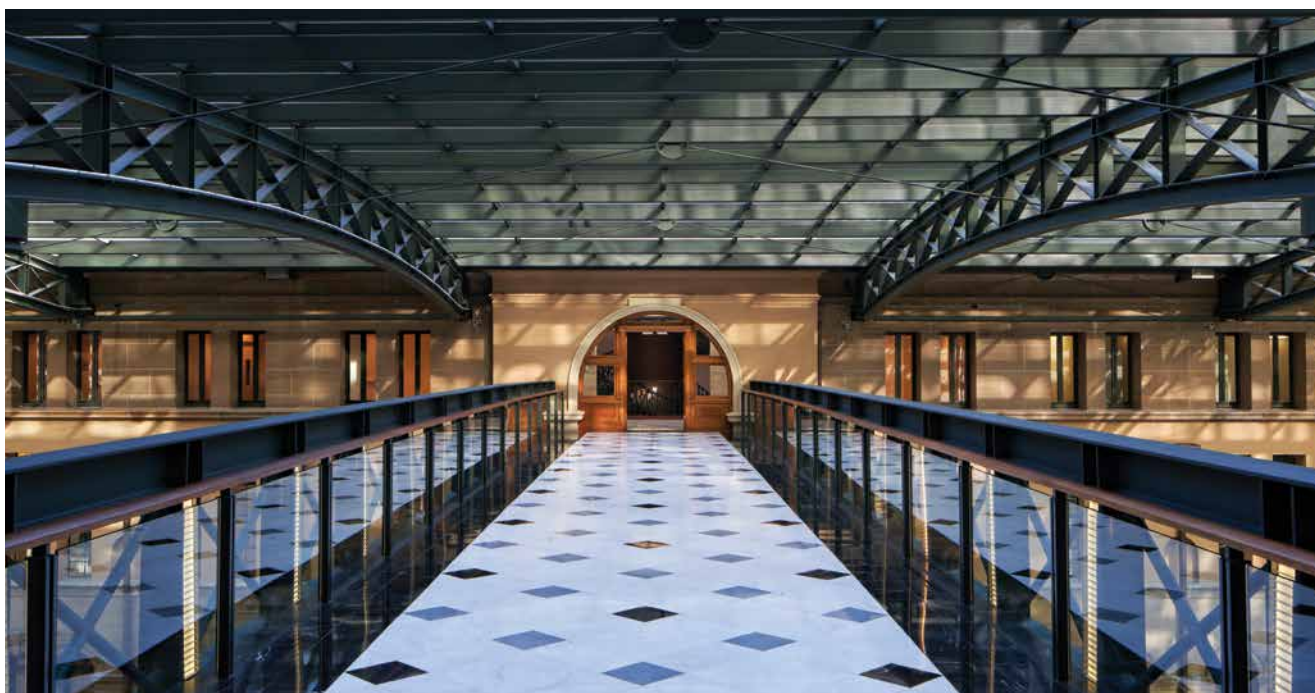
A FULLERTON EXPERIENCE TO REMEMBER

The Fullerton Hotel Sydney enjoys a prime location in the heart of the city's financial district. With a range of versatile spaces including two spectacular ballrooms, the hotel offers an exceptional backdrop for gatherings of various sizes. Whether you are planning a boardroom meeting or a magnificent gala, our team of experienced, flexible and committed professionals are here to ensure that your event is a resounding success.



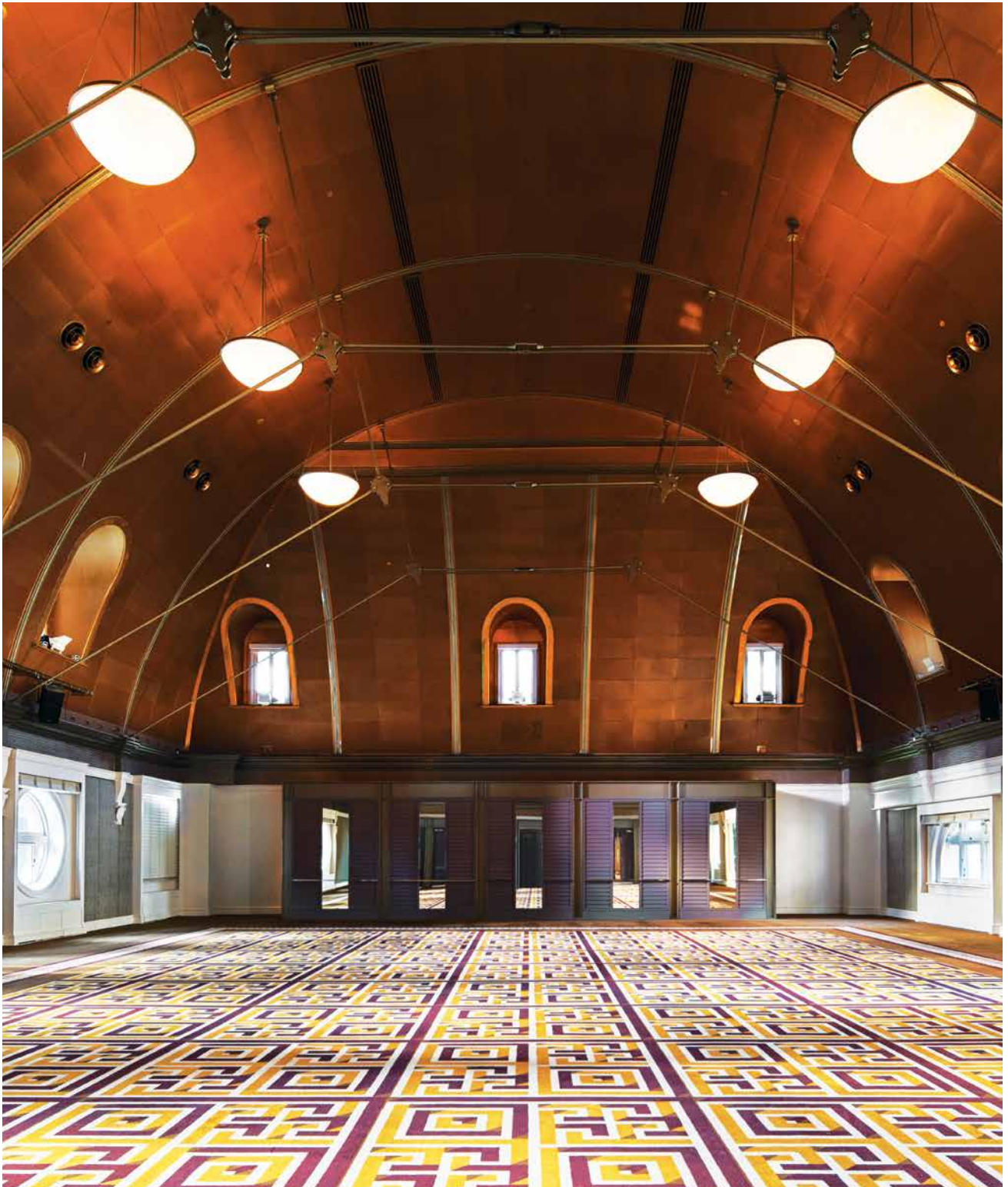
The Grand Ballroom

Impress your guests with an event in The Grand Ballroom, the largest pillarless hotel ballroom in Sydney. With a capacity to accommodate up to 1,000 guests in a banquet setting and 1,400 in theatre style, The Grand Ballroom is also divisible into four sections and can be set up to include cutting edge audiovisual technology – from sound and lighting to video conferencing, external broadcasting and more. With direct access from both the accommodation tower and the lobby, you will enjoy convenience with warm hospitality for grand occasions.



The Heritage Ballroom

Housed on level six of the historic former Sydney General Post Office building, The Heritage Ballroom has a stunning 11-metre dome ceiling and circular antique windows. Harmoniously combining the rich heritage of the building with modern amenities, it offers guests a unique experience.



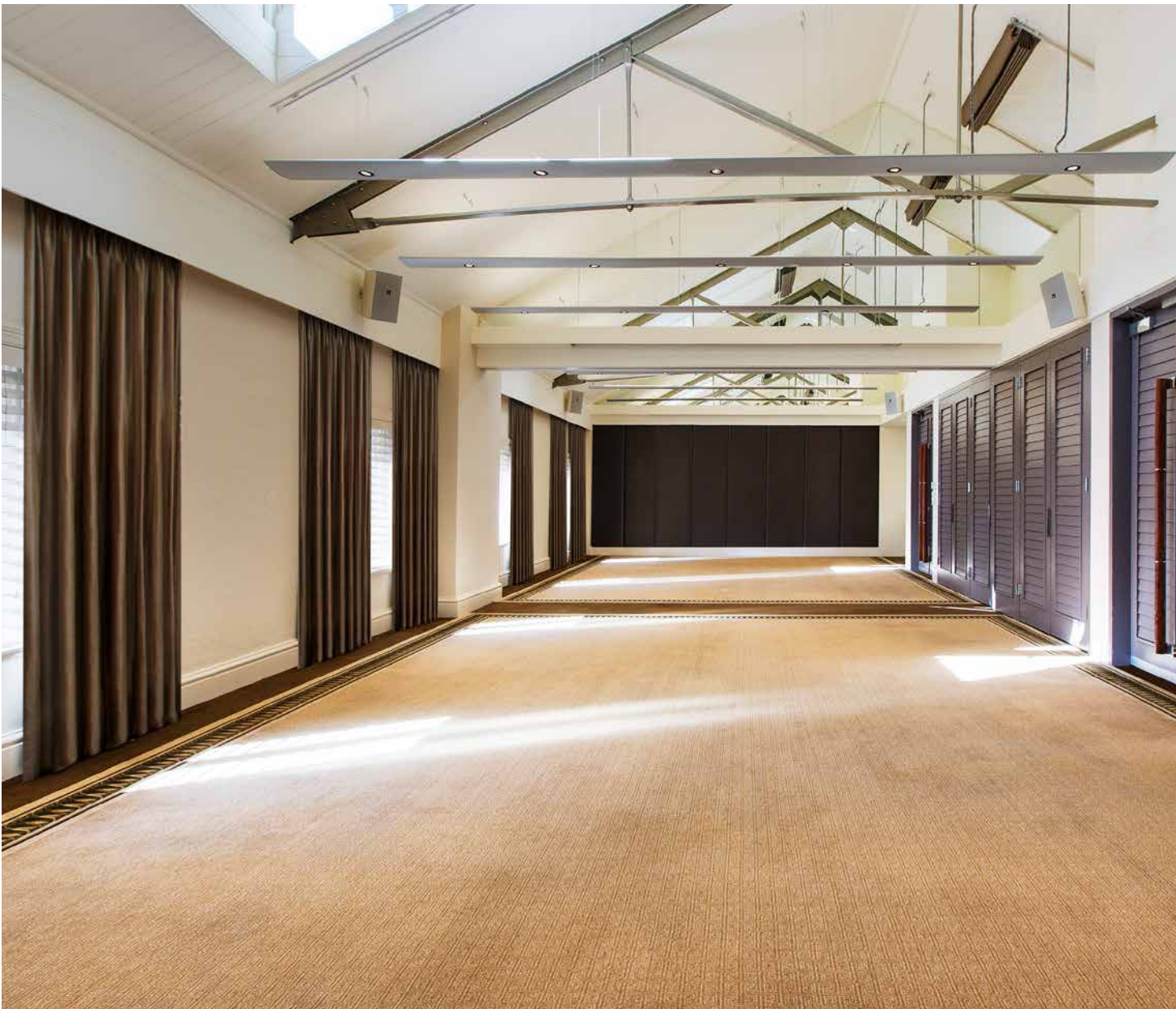


Heritage Conference Centre

Experience a versatile setting with our collection of five intimate Meeting Rooms (25 – 65 sqm), and a dedicated Executive Boardroom (76 sqm). Our Meeting Rooms offer the latest touchscreen technology, and are filled with natural light, making them ideal for networking and one-on-one meetings. Outfitted with the latest audiovisual technology and equipment, the Executive Boardroom offers a contemporary setting for meetings, complete with private guest amenities.

Barnet Room

Named after colonial architect James Barnet, who was instrumental in building Sydney's former General Post Office, the Barnet Room provides a sophisticated, pillarless space that is excellent for small- to medium-sized events.



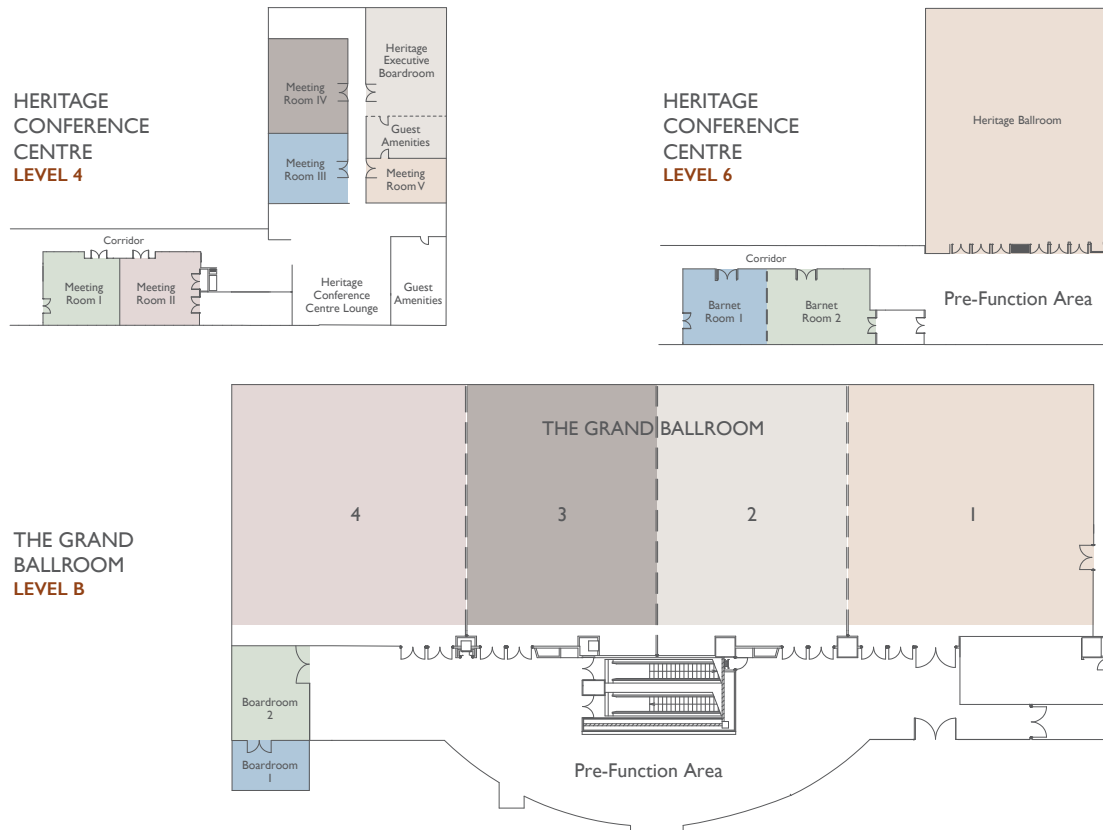


Accommodation

A total of 416 guest rooms and suites provide contemporary luxury. For the business traveller, a 24-hour business centre is available to meet all your needs. To ensure that you remain connected throughout your stay, complimentary high speed internet connectivity is readily available. Located on level 28, the Executive Club Lounge is perfect for guests who prefer an enhanced level of privacy and exclusivity.



Floor Plans & Capacity Chart



Room Name	DIMENSIONS		FLOOR AREA		CEILING		CAPACITIES				
	Metres	Metres ²	Feet	Metres	Theatre	Classroom	Cocktail	Banquet	Cabaret	U-shape	Boardroom
Heritage Level 4											
Meeting Room I	7.4 X 7.6	56	605	3.6	40	24	40	36	32	18	18
Meeting Room II	7.4 X 8.3	61	661	3.6	40	24	40	36	32	18	18
Meeting Room III	7.5 X 6.8	51	549	3.6	40	24	40	36	32	18	18
Meeting Room IV	7.5 X 6.8	51	630	3.6	40	24	40	36	32	18	18
Meeting Room V	6.1 X 4.4	25	289	3.6	-	-	-	10	-	-	10
Heritage Executive Boardroom	11.0 X 6.9	76	817	3.6	-	-	-	-	-	-	20
Heritage Level 6											
Heritage Ballroom	18.1 X 22.1	400	4305	11	350	160	350	250	200	-	-
Barnet Room	18.5 X 7.2	133	1433	3	100	42	80	80	64	36	-
Barnet Room 1	8.1 X 7.2	58	628	3	40	18	30	30	24	18	-
Barnet Room 2	10.4 X 7.2	75	805	3	50	24	50	50	40	18	-
The Grand Ballroom											
The Grand Ballroom	17.6 X 60.1	1058	11382	6	1400	660	1200	1000	800	-	-
The Grand Ballroom 1	17.6 X 17.2	303	3257	6	350	190	350	250	200	-	-
The Grand Ballroom 2	17.6 X 13.4	236	2538	6	240	140	300	200	160	-	-
The Grand Ballroom 3	17.6 X 13.4	236	2538	6	240	140	300	200	160	-	-
The Grand Ballroom 4	17.6 X 16.1	283	3257	6	350	190	350	250	200	-	-
The Grand Boardroom											
The Grand Boardroom 1	3.6 X 3.4	12	129	2.6	-	-	-	-	-	-	6
The Grand Boardroom 2	5.7 X 2.8	16	172	2.3	15	-	-	-	-	-	6

Capacities indicated are maximum and do not take into consideration staging or audio visual requirements.

Location

The Fullerton Hotel Sydney is housed in Sydney's former General Post Office building, a historic landmark that has been at the centre of Sydney's development since 1866. Centrally located in the heart of Sydney's Central Business District, it is located steps away from the city's most noteworthy restaurants, fashion brands and theatres, as well as iconic attractions.