

WELCOME TO SINDHORN MIDTOWN

In the beating heart of Bangkok, a cosmopolitan city with a diverse mix of art and culture. In between quiet pockets of greenery and the frenetic hum of soi alleyways. In the center of local happenings, corporate offices and entertainment hubs. Sindhorn Midtown rests in the neighborhood of Langsuan, giving you easy access to both Sukhumvit and Silom. A five-minute walk takes you to the BTS SkyTrain Station. Sindhorn Midtown is the urban cocoon to your Bangkok getaway.

YOUR SECOND HOME

Minimalistic in style. Simple tech. Easy comfort. The slender six-story tower of Sindhorn Midtown accommodates 49 units of private, serviced residences.

STUDIO UNITS

Number of rooms: 34
Room size: 32-40 sqm

Make it yours and live your way in one of our cozy studios. Stylishly furnished with a muted, earthy palette, the peaceful space features a mini balcony, equipped kitchenette and all the essential amenities. You're the only missing piece.



ONE-BEDROOM UNITS

Number of rooms: 15
Room size: 40-50 sqm

Comfort comes first. Yet, style is uncompromised. From a fully equipped kitchen to sleek furnishings, this One-bedroom unit has everything in place already. The distinct space is designed for smart living. Leave your worries behind and let us take care of you.



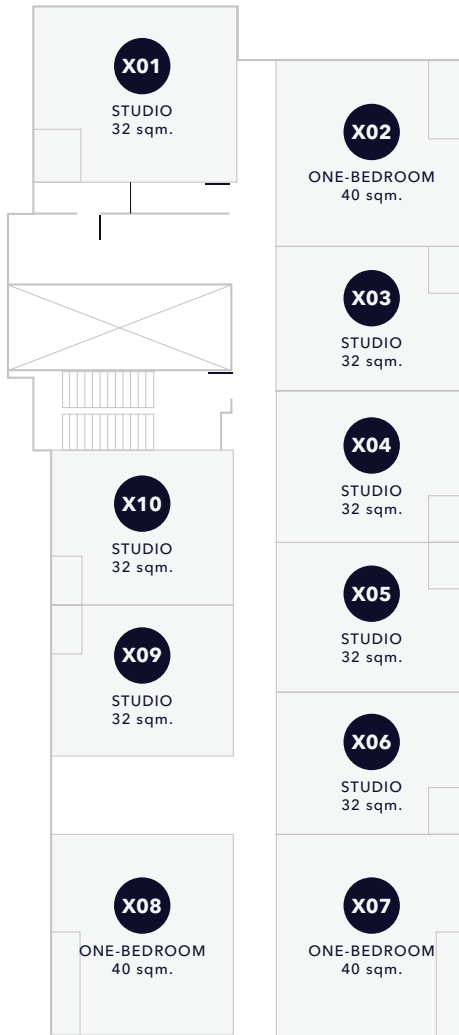
SPECS

- Complimentary residence-wide, Wi-Fi Internet access
- King-sized bed only
- Secure keycard system
- Smart LED TV with a selection of local and international channels
- Well-equipped kitchenette, including microwave, cooker hood, electric induction, washing sink, refrigerator, washing and dryer machine
- Private garden in the shared common area on the 2nd floor
- Car parks for the regular tenants

SECOND FLOOR



THIRD - SIXTH FLOORS



LANGSIJAN ROAD



FOODSTUFFS & FACILITIES

Tr.EAT

Opening hours:

daily; 6:30 am to noon (breakfast)
and noon to 3:30 pm (lunch)

Traditional Thai flavors. Intriguing Asian-fusion combinations. Nourishin breakfasts, lunch and everything in between.

Rhumba

Opening hours:

11 am to midnight

An extensive collection of rums. Classic and creative concoctions. Rhumba pairs handcrafted cocktails with sweet beats and light fare, from Asian to Western small bites.

Horizon Pool

Opening hours:

Swimming Pool, 7 am to 7 pm;
Pool Bar 9 am to 8 pm

Horizon Pool lets you indulge in curated cocktails and Asian-inspired canapés while taking in the Bangkok cityscape in sunshine from 18 floors up.

Fitness Center

24-hour access. Sky-high views from the 19th floor of the hotel tower. The Fitness Center will keep you in shape with all the latest fitness equipment from Seara. There are also two steam rooms available on the floor below.

7-Eleven Premium

Local drinks, daily toiletries and all the necessities you need – you can find it within Sindhorn Midtown's 7-Eleven Premium. The two-story convenience store boasts a sleek store design with special seating for you to savor a snack or two in leisure on the second floor. Opens 24/7 for your convenience, too.



CAN'T WAIT TO MOVE IN?

Make Sindhorn Midtown your second home.



68 Langsuan Road, Lumpini,
Pathumwan, Bangkok 10330 Thailand



+66 2 796 8888



sindhorn_midtown



sindhornmidtown.com



+66 2 796 8889



sindhornmidtownhotelbangkok

sindhorn
midtown