

INSPIRING MEETINGS + EVENTS

Creative spaces in the heart of everything



The updated setup style and reduced seating capacities have been adjusted to adhere the new safe social distancing measures in all meeting/function rooms and event spaces including Food & Beverage outlets with seating arrangements spaced of at least 1 metre apart.

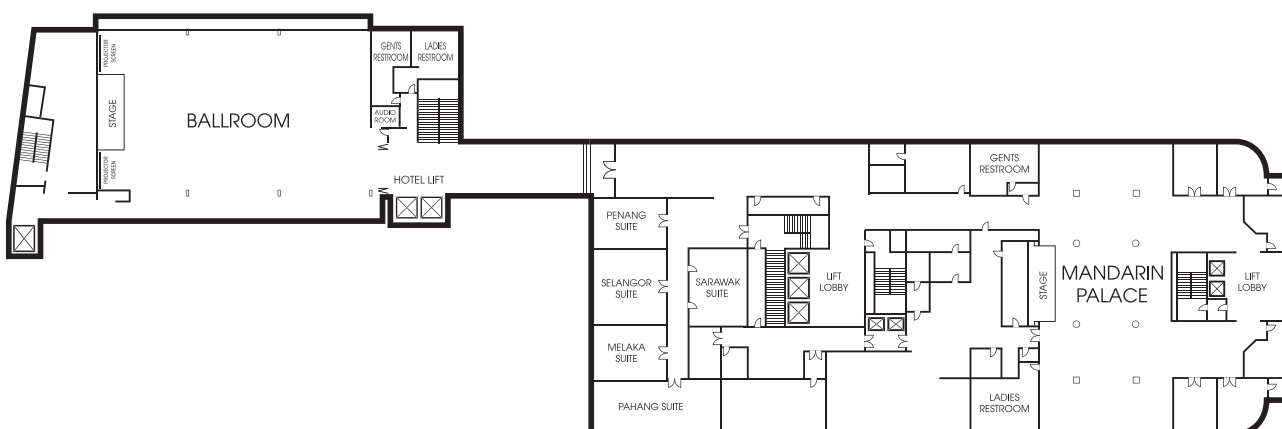
This is part of the additional precautionary measures in adhering to the strict preventive health & safety guidelines from the Ministry of Health (MOH) Malaysia & World Health Organization (WHO) to prevent the spread of the current coronavirus disease (COVID-19) pandemic.

These safe distancing measures supplement the sanitation and hygiene practices which include access to hand sanitisers and frequently disinfecting common public spaces.

ROOM DIMENSIONS AND CAPACITIES

Room	Metres	m ²	Ceiling height	Boardroom	U-Shape	Classroom	Banquet	Theatre
LEVEL 2								
Ballroom I	27.4 x 19.0	521	3.0	60	50	50	150	180
Ballroom II	27.4 x 19.0	521	3.2	60	50	50	150	180
Penang Suite	7.8 x 5.3	41	2.8	12	10	6	10	20
Selangor Suite	7.8 x 8.1	63	2.8	16	12	9	20	30
Melaka Suite	7.8 x 5.3	41	2.8	12	10	6	10	20
Pahang Suite	12.1 x 5.2	63	2.8	18	12	8	25	30
Sarawak Suite	7.8 x 5.8	45	2.8	12	10	16	10	20
Mandarin Palace	30.0 x 24.0	720	3.0	-	-	-	180	-
LEVEL 15								
Skyroom	31.2 x 10.0	312	2.5	20	18	26	60	80
LEVEL 16								
Penthouse Meeting Room	18.2 x 8.1	147	2.8	20	16	14	25	30
LEVEL 18								
Bintang Lounge & Restaurant		397	2.85	-	-	-	80	-

FLOOR PLAN



PLAN YOUR NEXT EVENT WITH US.
For more information, please contact:
FHI Centralized Sales
+603 2148 9166 ext. 2274 / 2276 / 2234
enquiry@fhi.com.my

THE FEDERAL KUALA LUMPUR
Low Yat And Sons Realty Sdn Berhad 195701000015 (2923-U)
35 Jalan Bukit Bintang,
55100 Kuala Lumpur, Malaysia.
fhihotels.com | bbes.com.my