

# INSPIRING MEETINGS + EVENTS

Creative spaces in the heart of everything



The updated setup style and reduced seating capacities have been adjusted to adhere the new safe social distancing measures in all meeting/function rooms and event spaces including Food & Beverage outlets with seating arrangements spaced of at least 1 metre apart.

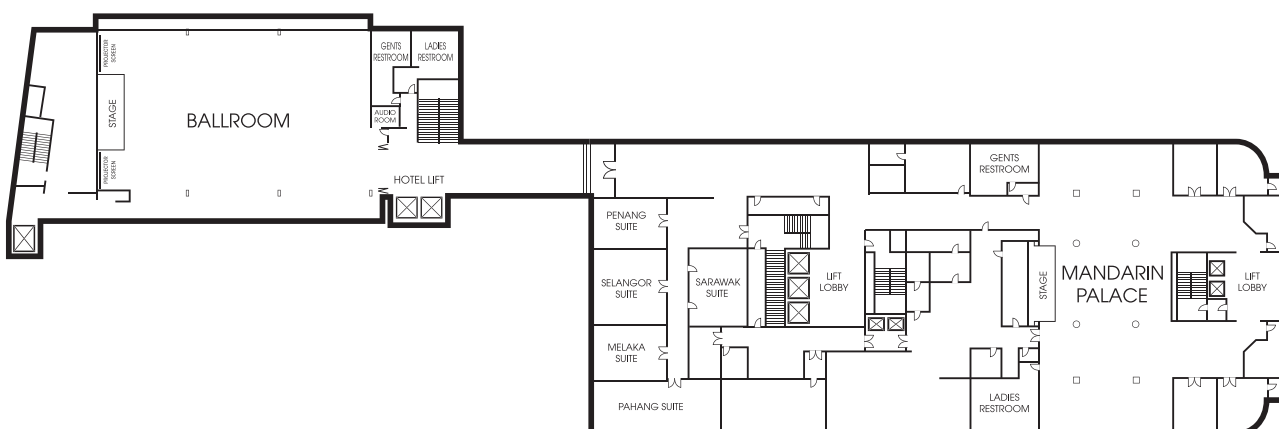
This is part of the additional precautionary measures in adhering to the strict preventive health & safety guidelines from the Ministry of Health (MOH) Malaysia & World Health Organization (WHO) to prevent the spread of the current coronavirus disease (COVID-19) pandemic.

These safe distancing measures supplement the sanitation and hygiene practices which include access to hand sanitisers and frequently disinfecting common public spaces.

## ROOM DIMENSIONS AND CAPACITIES

Room	Metres	m <sup>2</sup>	Ceiling height	Boardroom	U-Shape	Classroom	Banquet	Theatre
<b>LEVEL 2</b>								
Ballroom I	27.4 x 19.0	521	3.0	60	50	50	150	180
Ballroom II	27.4 x 19.0	521	3.2	60	50	50	150	180
Penang Suite	7.8 x 5.3	41	2.8	12	10	6	10	20
Selangor Suite	7.8 x 8.1	63	2.8	16	12	9	20	30
Melaka Suite	7.8 x 5.3	41	2.8	12	10	6	10	20
Pahang Suite	12.1 x 5.2	63	2.8	18	12	8	25	30
Sarawak Suite	7.8 x 5.8	45	2.8	12	10	16	10	20
Mandarin Palace	30.0 x 24.0	720	3.0	-	-	-	180	-
<b>LEVEL 15</b>								
Skyroom	31.2 x 10.0	312	2.5	20	18	26	60	80
<b>LEVEL 16</b>								
Penthouse Meeting Room	18.2 x 8.1	147	2.8	20	16	14	25	30
<b>LEVEL 18</b>								
Bintang Lounge & Restaurant		397	2.85	-	-	-	80	-

## FLOOR PLAN



**PLAN YOUR NEXT EVENT WITH US.**  
 For more information, please contact:  
**FHI Centralized Sales**  
**+603 2148 9166 ext. 2274 / 2276 / 2234**  
**enquiry@fhi.com.my**

**BUKIT BINTANG EVENT SPACES AT THE FEDERAL KUALA LUMPUR**  
 Federal Hotels International Sdn Bhd (Co. No. 197301002307 (15802-K))  
 35 Jalan Bukit Bintang,  
 55100 Kuala Lumpur, Malaysia.  
**+603 2148 9166** rsvn@federal.com.my  
**fhihotels.com**