



LOCATION SENSATION IN THE HEART OF EVERYTHING

LOCATION

There is a perfect location, and there is THE perfect location. Tribeca Serviced Suites Bukit Bintang sits prettily in the latter, perfectly located in the heart of Kuala Lumpur city centre. This ultra-chic and modern Serviced Suites offers an interesting choice for the discerning travellers of today.

Call it an urban oasis of modernistic lifestyle right in the heart of the prime tourist, financial, commercial, dining, shopping and entertainment districts of Kuala Lumpur, offering a relaxing retreat for leisure travellers as well as the amenities and ambience for the business travellers who seek an alternative to the norm of business class hotels. The contemporary interior design of the property and facilities represent the best of Malaysia's unique essence and character.

A beautifully designed infinity swimming pool on level 32 offers stunning views of the city skyline making us the perfect location for instagramable pictures and more with loved ones or with the kids. With the addition of lifestyle pods that serve individual needs and desires, we truly are one of a kind where each guest will experience and discover their individuality. Not forgetting the convenience of parking for guests too.

Tribeca Serviced Suites is also within walking distances to a myriad of public transportation options including the Bukit Bintang MRT, Tun Razak Exchange (TRX) MRT and shopping malls for you to explore. Together with our renowned Malaysian Hospitality and effortless service, we are indeed the perfectly logical choice for all our guests to begin exploring Kuala Lumpur.

Visit us at fhihotels.com or tribecakl.com to discover your unique experience.

EXPERIENCE THE OASIS

There is a choice of four unique and tastefully designed suites to choose from, with each type offering the best of what you would come to expect from us and that includes a fully equipped kitchen.

STUDIO SUITE

Is an ideal and spacious suite for individuals or couples seeking a cosy and private retreat. With a space of 510 sq.ft., it offers a choice of one double or twin beds, sofa and one bathroom.

DUO SUITE

Is perfect for couples with children as the suites are 657 - 868 sq.ft. that features two rooms - one with a double bed or twin beds and the other with a single bed. There is a choice of one or two bathrooms to satisfy your need.

EXECUTIVE SUITE

Is a larger suite with an amazing amount of space. At 1,020 sq.ft., the suite is perfect for families who prefer more space or business executives as living and sleeping quarters are separated to ensure the needed privacy. It offers two rooms - one with a double bed and the other with a double bed or twin beds. There are two bathrooms for added privacy.

PINNACLE SUITE

As the name implies, is the icing on the cake in our accommodation offerings. It is the perfect suite for long-term guests with a space and area that also commands breath-taking views of the city. With a duplex layout between 1,231 - 1,293 sq.ft., it has two rooms, one with a double bed and the other with a double bed or twin beds and two bathrooms. Complementing this oasis is a kitchenette to ensure the most comfortable stay with us.

ACCOMMODATION

- 105 units including the spacious corner rooms which come with dazzling views of KL City and Tun Razak Exchange (TRX)'s skyline
- All suites are fully air-conditioned with individual temperature control
- Plush King bed or Twin beds
- Living room and dining room
- Balcony with spectacular city views
- Free fibre optic broadband WiFi

- Electronic key card system
- Large flat screen TV
- Cable TV
- Personal safety box
- Luggage rack
- Bathroom amenities
- Washing machine with dryer function
- Iron and ironing board
- Universal plug points

And a fully equipped kitchen with:

- Refrigerator
- Oven & electric stove with hood
- Chinaware, glassware, crockery and cooking utensils

EXPERIENCE THE UNIQUENESS

The Lifestyle Pods, our unique one of a kind Pods are strategically located for your convenience:

- The Gym Pod is for guests to work up a healthy sweat
- The Social Pod is for guests to mix and mingle in a relaxed setting
- The Business Pod is for guests who just need to get work done
- The Zen Pod is for guests to experience peace and relaxation
- The Jungle Pod is for little guests to go wild with playful fun and laughter

THE SUN DECK, our gorgeous infinity pool on Level 32 offers amazing views of the city. It is a family-friendly pool for adults and kids to swim, play or just laze the day away while enjoying a good tan.

FACILITIES

- Car parking available (charges applicable)
- Booking of sight-seeing tours including KL Hop-On Hop-Off City Tour
- Medical service upon request
- Golfing at Tasik Puteri Golf Club And Resorts can be arranged

THE RETAIL & DINING OFFERINGS

Wizards at Tribeca, is a restaurant that offers a unique culinary culture in a cosy setting with an international fusion menu that will kickstart your mornings.

Regus is another offering where our guests can stay productive with modern workspaces and co-working solutions which are perfect for business travellers who wish to maintain the privacy of their suites.

AWARD ACHIEVED

- Winner of 2020 Travellers' Choice Award by Tripadvisor



Studio Suite



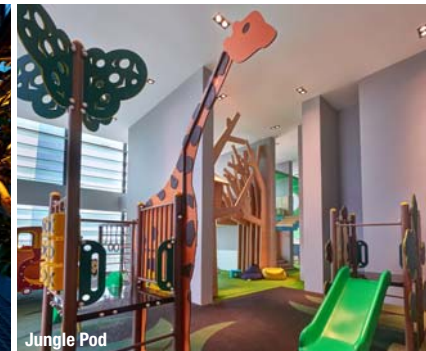
Duo 2 Suite



Pinnacle Suite



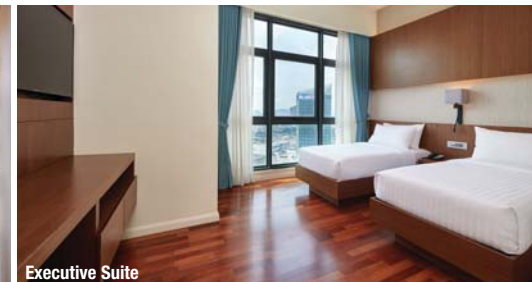
Sun Deck



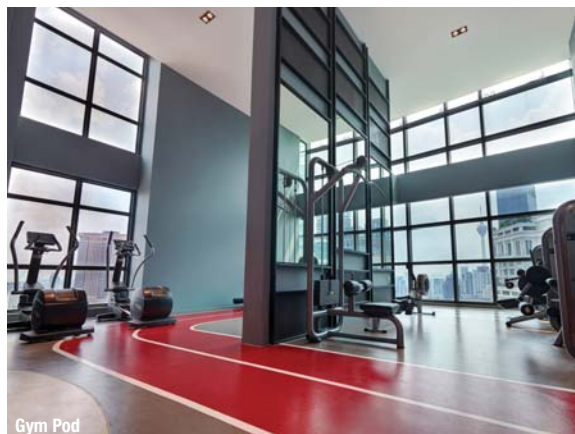
Jungle Pod



Business Pod



Executive Suite



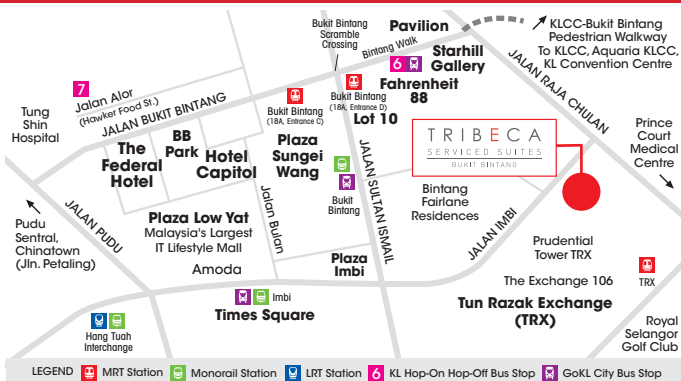
Gym Pod



Wizards Restaurant



Regus



TRIBECA SERVICED SUITES BUKIT BINTANG

Fairlane Hospitality Sdn Bhd
(Co. No. 200801036813 (838153-D))

215, Jalan Imbi,
55100 Kuala Lumpur, Malaysia.

+603 2727 2288

rsvn@tribecakl.com

fihhotels.com | tribecakl.com

f TribecaKuL @ TribecaKL

GDS Code: WV
Amadeus: KUL672
Galileo: E4453
Sabre: 318427
WorldSpan: KUL72



Scan for more info.

BOOK direct and SAVE
BEST AVAILABLE RATE
NO BOOKING FEES